

\$1,800,000 - 4300 Memorial Trail, Sylvan Lake

MLS® #A2225268

\$1,800,000

6 Bedroom, 5.00 Bathroom, 3,535 sqft

Residential on 2.99 Acres

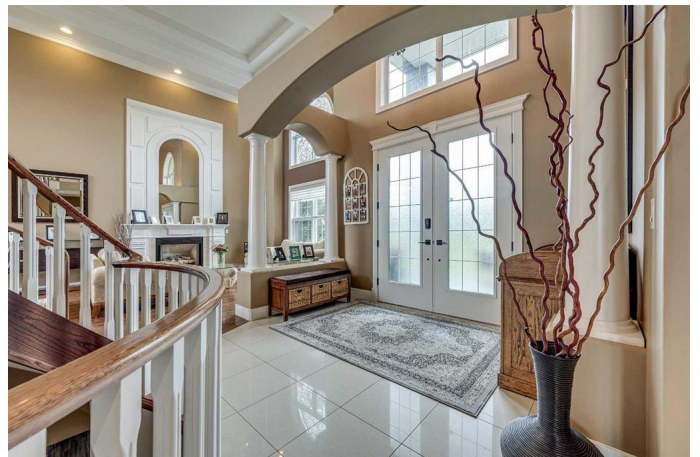
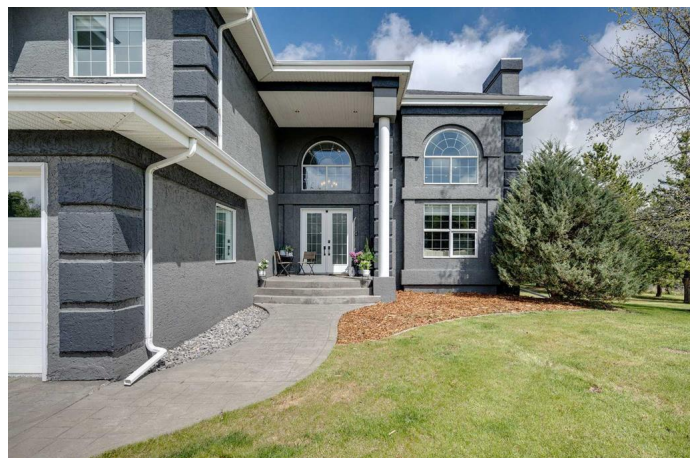
Vista, Sylvan Lake, Alberta

Perched high on the south hill overlooking the charming town of Sylvan Lake, this magnificent property offers unparalleled luxury, breathtaking views and development opportunities. With over 5,000 square feet of living space, this grand estate features dramatic 22-foot cathedral ceilings and a stunning spiral staircase that sets the tone for the opulence within.

The main level is a haven for culinary enthusiasts, boasting a chef's kitchen equipped with top-of-the-line appliances. The formal dining and living rooms are ideal for entertaining guests in style, while the cozy family room offers a great space for everyday living. Additionally, there is a main floor office for work or managing the home. Practical amenities abound, with a large back entryway featuring a locker room, laundry room, and a convenient 2-piece bathroom.

Upstairs, you'll find four spacious bedrooms, two of which have ensuite bathrooms for added privacy and comfort. The primary suite is your personal sanctuary, featuring a dream ensuite with a soaker tub, steam shower, and walk-in closet. A loft area provides a serene space to relax and enjoy the panoramic views, and a stylish 5-piece bathroom serves the other bedrooms.

The walkout basement offers two large bedrooms, one with a walk-in closet, and a full 4-piece bathroom. A kitchenette makes this space perfect for empty-nester parents. The entertainment hub includes a games area and



a theatre setting perfect for movie nights. Garages and additional spaces are plentiful. The triple attached garage offers ample space for everyday parking. The detached shop is a massive 46 x 36 structure accommodating vehicles, boats or all your toys, and includes a recently added shop hoist. The shop also features a bonus mezzanine with a full kitchen, 4-piece bath, and a balcony overlooking the lake. There are options to convert the upper part of the detached shop into additional living space with board-in bedrooms, providing even more versatility. An additional 2-piece bathroom and a stackable laundry unit in the main garage area adds even more convenience.

The property has had numerous upgrades, ensuring modern comfort and efficiency. The garage floor was upgraded with an epoxy finish. Both the house and shop exteriors were painted and weather-sealed. All interior tiles were sealed and 2.5 bathrooms were recently renovated. Updated custom cabinetry and crown moldings are just a few of the upgrades that have been done. 70 Foot RV parking on west side of the shop with 30 amp plug

Beyond the main house, this property offers potential for development with 10 lots or 6 executive lots that can be subdivided, totaling 2.99 acres in lot size on the perimeter of the Vistas.. SUBDIVISION is an option if INVESTMENT is what you seek. This estate offers a perfect blend of luxury, comfort, and functionality, making it a dream home for discerning buyers. Don't miss the opportunity to own this extraordinary property with its unmatched views and top-of-the-line amenities.

Built in 1997

Essential Information

MLS® #

A2225268

Price	\$1,800,000
Bedrooms	6
Bathrooms	5.00
Full Baths	4
Half Baths	1
Square Footage	3,535
Acres	2.99
Year Built	1997
Type	Residential
Sub-Type	Detached
Style	2 Storey, Acreage with Residence
Status	Active

Community Information

Address	4300 Memorial Trail
Subdivision	Vista
City	Sylvan Lake
County	Red Deer County
Province	Alberta
Postal Code	T4S 0R1

Amenities

Parking	220 Volt Wiring, Additional Parking, Driveway, Quad or More Detached, RV Access/Parking, Tandem, Triple Garage Attached
# of Garages	3

Interior

Interior Features	Built-in Features, Closet Organizers, Crown Molding, Granite Counters, High Ceilings, Kitchen Island, See Remarks, Separate Entrance
Appliances	Central Air Conditioner, Dishwasher, Microwave, Refrigerator, Stove(s), Washer/Dryer
Heating	Boiler, In Floor, Forced Air
Cooling	Central Air
Fireplace	Yes
# of Fireplaces	2
Fireplaces	Gas
Has Basement	Yes
Basement	Exterior Entry, Finished, Full, Walk-Out

Exterior

Exterior Features	Fire Pit, Private Yard
Lot Description	Fruit Trees/Shrub(s), Landscaped, Views
Roof	Asphalt
Construction	Stucco, Wood Frame
Foundation	Poured Concrete

Additional Information

Date Listed	May 27th, 2025
Days on Market	59
Zoning	FD

Listing Details

Listing Office	Royal LePage Network Realty Corp.
----------------	-----------------------------------

Data is supplied by Pillar 9â„¢ MLS® System. Pillar 9â„¢ is the owner of the copyright in its MLS® System. Data is deemed reliable but is not guaranteed accurate by Pillar 9â„¢. The trademarks MLS®, Multiple Listing Service® and the associated logos are owned by The Canadian Real Estate Association (CREA) and identify the quality of services provided by real estate professionals who are members of CREA. Used under license.