

# \$399,000 - 10 Park Lane, Didsbury

MLS® #A2237401

**\$399,000**

2 Bedroom, 2.00 Bathroom, 1,285 sqft

Residential on 0.03 Acres

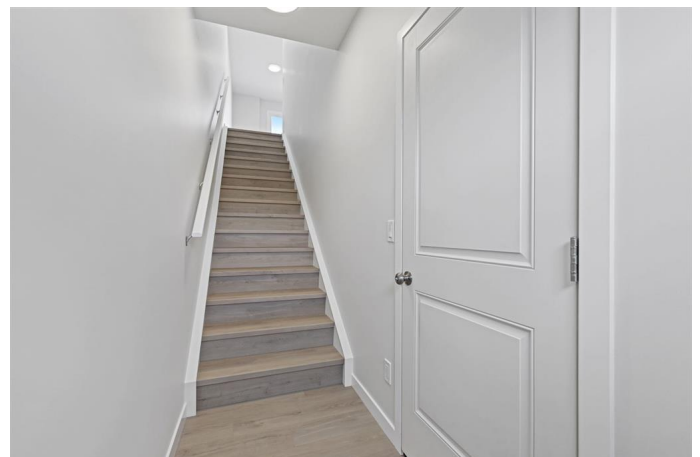
NONE, Didsbury, Alberta

Welcome to this stylish and affordable freehold townhouse with no condo fees, built by Jonboyz Construction, a reputable local builder in Didsbury. Located in the desirable community of Valarosa, this home offers nearly 1,300 sq ft of functional living space with thoughtful design and family-friendly features.

The main level includes an attached garage, utility room, and direct access to the backyard â€” offering both practicality and convenience. Upstairs, the bright and spacious main floor boasts an open dining area, cozy living room, and a modern kitchen complete with white soft-close cabinets, white quartz countertops, a pantry, and vinyl plank flooring in a warm, neutral tone. This level also includes a 2-piece bathroom and access to your private rear deck â€” ideal for relaxing or entertaining.

On the third floor, youâ€™ll find two generously sized bedrooms, a 4-piece bathroom, and a convenient upstairs laundry room. The primary bedroom features dual closets, providing excellent storage space. Carpet flooring adds warmth and comfort to the bedrooms and hallway.

This townhouse offers a spacious backyard, and front yard â€” a rare find. The builder will also be including a fully fenced backyard, providing privacy, security, and a safe space for children or pets. Located just steps from a



scenic protected forest area with walking paths and local wildlife, and close to a playground and baseball diamond, this home is perfect for families looking for space and community.

Donâ€™t miss your chance to own this well-crafted home in a peaceful, family-oriented neighborhood.

Built in 2025

**Essential Information**

MLS® #	A2237401
Price	\$399,000
Bedrooms	2
Bathrooms	2.00
Full Baths	1
Half Baths	1
Square Footage	1,285
Acres	0.03
Year Built	2025
Type	Residential
Sub-Type	Row/Townhouse
Style	3 Storey
Status	Active

**Community Information**

Address	10 Park Lane
Subdivision	NONE
City	Didsbury
County	Mountain View County
Province	Alberta
Postal Code	T0M0W0

**Amenities**

Parking Spaces	2
Parking	Driveway, Single Garage Attached
# of Garages	1

**Interior**

Interior Features	Pantry, Quartz Counters
Appliances	Dishwasher, Dryer, Electric Stove, Microwave Hood Fan, Refrigerator, Washer
Heating	Forced Air, Natural Gas
Cooling	None
Basement	None

## Exterior

Exterior Features	Private Yard
Lot Description	Back Yard, Front Yard, Rectangular Lot
Roof	Asphalt Shingle
Construction	Vinyl Siding
Foundation	Slab

## Additional Information

Date Listed	July 5th, 2025
Days on Market	26
Zoning	R5

## Listing Details

Listing Office	Real Broker
----------------	-------------

Data is supplied by Pillar 9â„¢ MLSÂ® System. Pillar 9â„¢ is the owner of the copyright in its MLSÂ® System. Data is deemed reliable but is not guaranteed accurate by Pillar 9â„¢. The trademarks MLSÂ®, Multiple Listing ServiceÂ® and the associated logos are owned by The Canadian Real Estate Association (CREA) and identify the quality of services provided by real estate professionals who are members of CREA. Used under license.